

Payment solution

.....

# YOMANI

# colourful

# innovation



**worldline**  
e-payment services

..... an atos company

# YOMANI

## Designed for retail

YOMANI™ ML and YOMANI XR are countertop terminals for attended use in retail environments.

Thanks to years of experience in the large retail environment, our designers have delivered a high-performance, low-consumption terminal with simple USB, Ethernet and serial port connectivity.

## Optimal acceptance

The YOMANI terminal has three clearly separated card interfaces for chip, magnetic-stripe and contactless cards. Programmable lighting guides customers to the correct interface. Backlit keys with tactile identifiers make the keypad stand out for ease of use.

Users also welcome the large full-colour display. Merchants can use the display for eye-catching apps and communications, unlocking an exciting customer experience.

## Ultimate performance and security

The terminal is powered by a new engine with two fast processor cores, more memory and superior crypto functionalities - features that combine to deliver the ultimate in performance.

Internally, the YOMANI terminal offers unparalleled security: dedicated security processor, extensive proprietary security measures and international certifications like PCI PTS 3.x mean data, terminal and apps are fully secure.

Externally, a key security feature of the YOMANI is its characteristic PIN privacy shield. Seamlessly integrated in the design, this protects the cardholder from shoulder surfing.

## Ease of use

The YOMANI ML configuration supports multi-lane payment for large retailers. With its USB device interface, it offers a single-wire solution for connecting the terminal with e-POS equipment. Smart and easy!

The YOMANI XR configuration is the fully equipped terminal for all retail environments. The additional USB host interface provides connectivity to peripherals such as biometrics devices and bar code readers.

Optional accessories for the XR include a fast, compact printer and a range of communications boards.

## Terminal management

Manage your terminal park with XENTURION®, for:

- ▶ secured remote software download
- ▶ scheduling and parameter management
- ▶ remote terminal support and diagnostics
- ▶ remote key loading (RKL)

## Care for the environment

Like all current Worldline products, the YOMANI is manufactured in line with RoHS2 & WEEE standards.

## Accessories

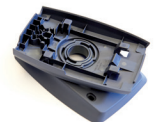
- ▶ The **YOMANI contactless reader** (NFC) reads contactless cards and devices held near the terminal. Faster and more convenient than inserting or swiping a card
- ▶ The **Merchant Unit** is an ideal extra when using the terminal without an e-POS equipment. Connecting to the terminal with a USB cable, it gives merchants an extra keyboard and includes an integrated ticket printer.
- ▶ Without Merchant Unit or e-POS equipment, both merchant and customer have to use the terminal keyboard. The **swivel plate** rotates up to 270°, making it easier to reach the keyboard from both sides of the counter.
- ▶ The **fixation plate** makes it easy to secure the YOMANI terminal to a countertop. The plate is secured with screws or adhesive pads and the terminal clicks on to it.
- ▶ The fast **thermal printer** for the XR means merchants are not obliged to have a Merchant Unit or an ECR just for ticket printing. 30m paper rolls - phenol-free also available - give long use between easy replacements.
- ▶ A **choice of communication boards** for the XR lets you add 3G, 2G, WiFi/Bluetooth or PSTN (dial-up) communications.

## Memorable design

Smooth curves, sober lines, high-quality finish, contrasting textures and a compact footprint - once seen, the YOMANI terminal is never forgotten!

## Colours

Standard colours for the YOMANI terminal are white and anthracite grey. Other colours can be delivered, depending on the number of terminals ordered.



# Specifications

## Processor

- ▶ Dual ARM™ 9 processor cores, superior cryptographic functionalities

## Memory

- ▶ 64 MB RAM, 128 MB Flash

## SAMs

- ▶ 2 SAM slots (type ID O)

## Security

- ▶ 3DES, AES and RSA encryption algorithms
- ▶ DUKPT key management
- ▶ Additional security schemes available
- ▶ SSL V3.0

## Approvals

- ▶ EMV 4.3 level 1 and 2
- ▶ TQM
- ▶ PCI PTS 3.x, including SRED and Open Protocols
- ▶ CE, EMC

## Software

- ▶ Linux® operating system
- ▶ Linux-based development kit (C and Java™)

## Keypad

- ▶ Backlit ergonomic keypad
- ▶ Tactile identifiers for accessibility

## Display

- ▶ Colour TFT display
- ▶ 2.8", ¼ VGA, 64K colours.
- ▶ 320 x 240 pixels

## Card readers

- ▶ Chip-card reader (EMV 4.3 level 1 compliant)
- ▶ Triple-track magnetic-stripe reader (ISO 1/2/3)
- ▶ Contactless NFC ISO 14443 A & B

## Communications (ML and XR)

- ▶ USB device
- ▶ Ethernet
- ▶ Serial (RS232)
- ▶ USB host (XR only)

## Optional communication interfaces for XR

- ▶ 3G: UMTS, HSDPA (850, 900, 1800, 1900 and 2100 MHz)
- ▶ 2G: GSM, GPRS, EDGE (850, 900, 1800 and 1900 MHz)
- ▶ WiFi, Bluetooth
- ▶ PSTN (dial-up)

## Operating conditions

- ▶ Operating temperature 0 °C to +50 °C
- ▶ Operating humidity 20% to 85%, non-condensing

## Size and weight

- ▶ Without accessories: dimensions 107 mm wide x 170 mm long x 103 mm high
- ▶ Weight 590 g

## Power supply

- ▶ Power supply via USB adaptor 5 V, 500 mA
- ▶ Power supply via mains adaptor 100-250 VAC, 47-63 Hz (XR only)



reddot design award  
winner 2010



# About Worldline

Worldline, an Atos subsidiary, is the European leader and a global player in the payments and transactional services industry. Worldline delivers new generation services, enabling its customers to offer smooth and innovative solutions to the end consumer. Key actor for B2B2C industries, with 40 years of experience, Worldline is ideally positioned to support and contribute to the success of all businesses and administrative services in a perpetually evolving market. Worldline offers a unique and flexible business model built around a global and growing portfolio, thus enabling end-to-end support. Worldline activities are organized around three axes: Merchant Services, Mobility and e-Transactional Services, Financial Processing Services. In 2012, Worldline's activities within the Atos Group generated (pro forma) revenues of 1.1 billion euros. The company employs more than 7,100 people worldwide.

[worldline.com](http://worldline.com)



# About Atos

Atos SE (Societas Europaea) is an international information technology services company with annual 2012 revenue of EUR 8.8 billion and 76,400 employees in 47 countries. Serving a global client base, it delivers hi-tech transactional services, consulting and technology services, systems integration and managed services. With its deep technology expertise and industry knowledge, it works with clients across the following market sectors: Manufacturing, Retail, Services; Public sector, Healthcare & Transport; Financial Services; Telecoms, Media & Technology; Energy & Utilities. Atos is focused on business technology that powers progress and helps organizations to create their firm of the future. It is the Worldwide Information Technology Partner for the Olympic and Paralympic Games and is quoted on the NYSE Euronext Paris market. Atos operates under the brands Atos, Atos Consulting & Technology Services, Atos Worldline and Atos Worldgrid.

For more information, visit: [atos.net](http://atos.net)



# Atos Worldline SA/NV

Haachtsesteenweg 1442 Chaussée de Haecht  
B-1130 Brussels  
Belgium  
Tel: +32 (0)2 727 66 44  
Fax: +32 (0)2 727 72 83

The information in this document is subject to change without notice and shall not be construed as a commitment by Worldline. While Worldline has made every attempt to ensure that the information contained in this document is correct, Worldline does not provide any legal or commercial warranty on the information and technology provided in this folder. Furthermore, Worldline reserves the right to change the physical and technical features of this product without advance notice. The content of this document, including but not limited to trademarks, designs, logos, text, images, is the property of Worldline and is protected by the Belgian Act of 30.06.1994 related to the author's right and by the other applicable Acts. The words YOMANI and other trademarks used in this folder are the property of Worldline. Linux is a registered trademark of Linus Torvalds, Java is a registered trademark of Sun Microsystems Inc. and ARM is a registered trademark of ARM Limited. These terms shall be governed by and construed in accordance with the laws of Belgium. Courts located in Brussels have jurisdiction in the event of any litigation.

